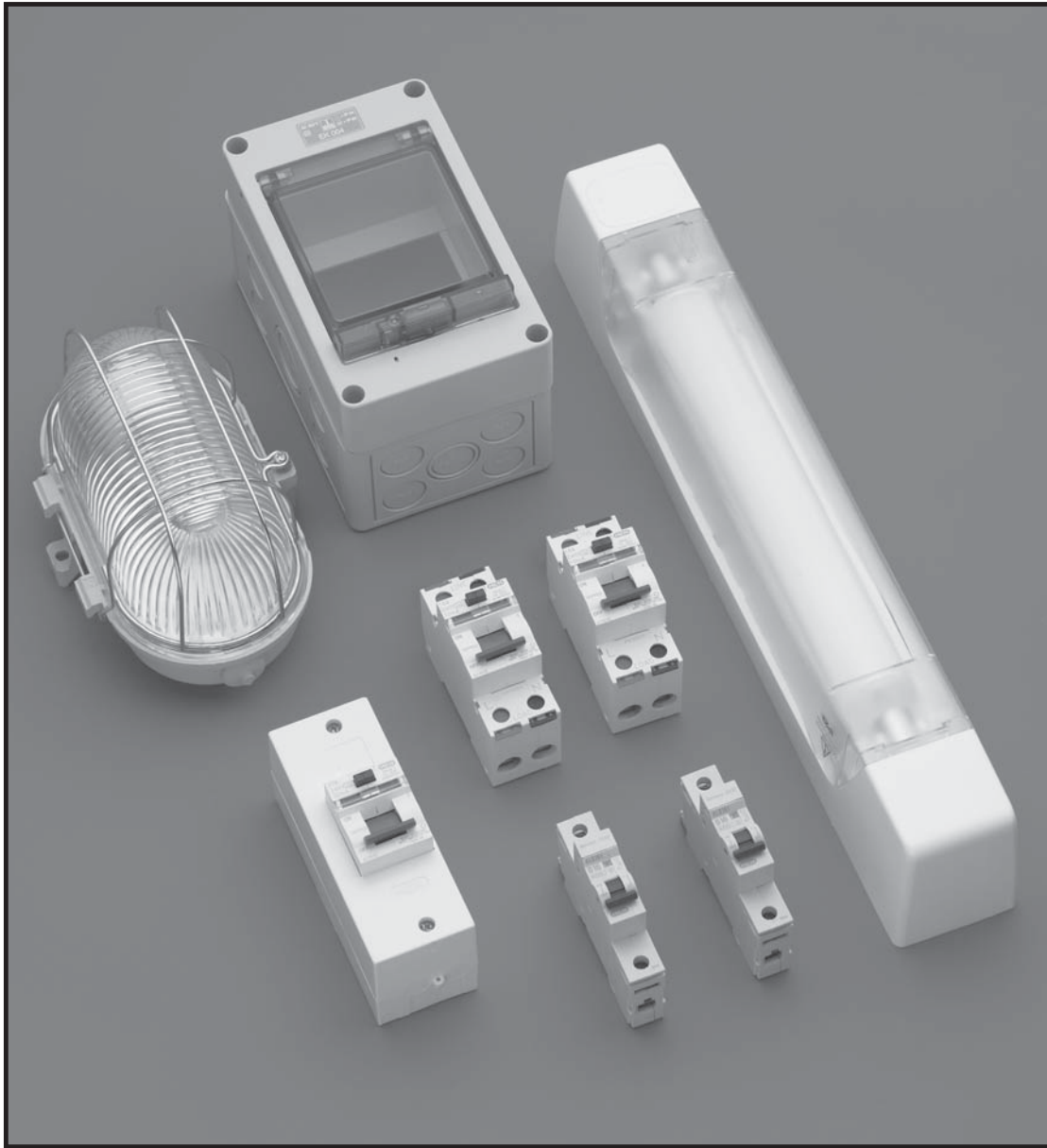


INTERNATIONAL



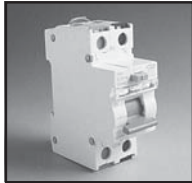
LIGHT FIXTURES AND CIRCUIT BREAKERS



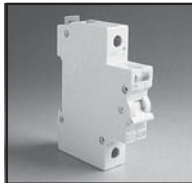
© 2004 International Configurations, Inc. Entire contents of this catalog copyrighted. www.InternationalConfig.com

International Configurations, Inc. • P.O. Box 3374 • Enfield, Connecticut 06083 • TEL (860) 749-6380 • FAX (860) 749-2985 197

GFCI (RCCB) 240 VOLT (50 HZ) CIRCUIT BREAKERS CIRCUIT BREAKERS, 240 VOLT (50 HZ) RCBO 230 VOLT (50 HZ) COMBINATION GFCI (RCCB)/OVERLOAD BREAKERS



A16UE



AB16S2



007886

Catalog Number	Amp Rating	Trip Current	Drawing Page
A16UE	16	10 mA	259
A16HE	16	30 mA	259
A25HE	25	30 mA	259
A25ME	25	100 mA	259
A32HE	32	30 mA	259
A32ME	32	100 mA	259
A40HE	40	30 mA	259
A40ME	40	100 mA	259
AB6S2	6	--	259
AB10S2	10	--	259
AB16S2	16	--	259
AB20S2	20	--	259
AB32S2	32	--	259
AB40S2	40	--	259
AB45S2	45	--	259
AB50S2	50	--	259
007879	16	10 mA	218
007886	16	30 mA	218
007887	20	30 mA	218
007888	25	30 mA	218
007889	32	30 mA	218
007890	40	30 mA	218

GFCI (RCCB) double pole circuit breaker.
DIN rail mount. Box type terminals accept 1 to 50 mm² conductors.
Approved for AC 22 duty.
Complies with standards: IEC 1008 Part 1, IEC 408-1972, BS 4293-1983, BS 5419-1977, EN 50082-1: 1992
35 mm size (2 modules).

NOTE: GFCI (RCCB) circuit breakers *do not* provide overload or short circuit protection. RCCB type devices must be connected to some form of line protection. Use overload circuit breakers or fused protection.

Circuit breakers, single pole.
DIN rail mount. Provides overload and short circuit protection.
Complies with BS 3871: Part 1 Type 2 operating characteristic M6, 6KA duty.
17.5 mm size (1 module).
NOTE: GFCI (RCD) add on modules available that convert above overload breakers to combination RCBO (GFCI/overload) circuit breakers.
Catalog number AH 30 = 30 mA trip
Catalog number AH 100 = 100 mA trip

Combination GFCI / Overload RCBO Single Pole Circuit Breakers






DIN rail mount. Provides GFCI (RCCB) and overload / short circuit protection.
35 mm size (2 modules).
Box type terminals accept 1 to 50 mm² conductors.

NOTE: See page 199 for enclosures.

NOTE: See page 98 for DIN rail mounting bracket for various European receptacles.



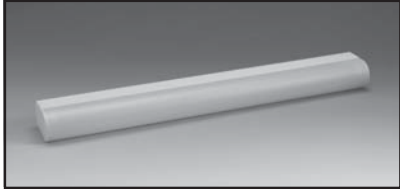
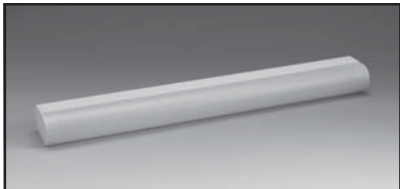
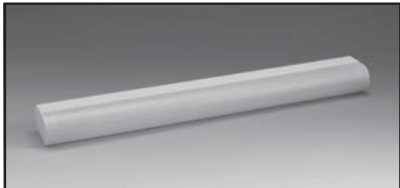
SURFACE MOUNT ENCLOSURES

Description	Catalog Number	Amp Rating	Trip Current	Drawing Page	
<p>Surface mount enclosure. IP 40 protection. Cable entry top and bottom. For use with 1 double pole or two single pole breakers. Grounding terminal included.</p> <p>NOTE: Flush mount and surface mount enclosures with 100 ampere main isolating switch available.</p> <p>Model numbers AS14, AS14F, AS19, AS19F</p>	AN25	N/A	N/A	259	
<p>Surface mount enclosure for GFCI (RCCB) units and / or circuit breakers. IP 54 protection with hinged and gasketed transparent cover. Cable entry top and bottom. For use with 2 double pole or 4 single pole circuit breakers. Grounding terminal strip, neutral strip, box accessories included.</p> <p>NOTE: Flush mount and surface mount enclosures with 100 ampere main isolating switch available.</p> <p>Model numbers AS14, AS14F, AS19, AS19F</p>	4QEL	N/A	N/A	222	
<p>Surface mount enclosure for GFCI (RCCB) units and / or circuit breakers. IP 54 protection with hinged and gasketed transparent cover. Cable entry top and bottom. For use with 6 double pole or 12 single pole circuit breakers. Grounding terminal strip, neutral strip, box accessories included.</p> <p>NOTE: Flush mount and surface mount enclosures with 100 ampere main isolating switch available.</p> <p>Model numbers AS14, AS14F, AS19, AS19F</p>	12QEL	N/A	N/A	218	
<p>Surface mount enclosure for GFCI (RCCB) units and / or circuit breakers. IP 54 protection with hinged and gasketed transparent cover. Cable entry top and bottom. For use with 12 double pole or 24 single pole circuit breakers. Grounding terminal strip, neutral strip, box accessories included.</p> <p>NOTE: Flush mount and surface mount enclosures with 100 ampere main isolating switch available.</p> <p>Model numbers AS14, AS14F, AS19, AS19F</p>	24QEL	N/A	N/A	219	
<p>Blanking plate for filling unused openings in enclosures.</p>	QBP5	N/A	N/A	261	
<p>One phase power distribution block. 125 ampere 600 volt ac. DIN rail or panel mount. Line side accepts one #8-2 AWG conductor. Six #14-6 AWG loadside terminals.</p>	38041	125 A	N/A	221	




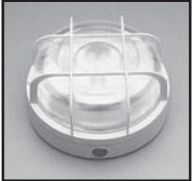


230 VOLT LIGHT FIXTURES Fluorescent Type



	Cat. No.	Drawing	Description
	681348	Pg. 230	Fluorescent light fixture. 11 watts, 230 volts, 50 Hz. IP 44 class 1. White aluminum base, opal polycarbonate lens. Less lamp. 335 mm long. "CE" Mark
	006017	---	Fluorescent lamp. 11 watts. G23 lamp base. Cool white color. Type TC11W. For fixture No. 681348.
	681386	Pg. 230	Fluorescent light fixture. 18 watts, 230 volts, 50 Hz. IP 44 class 1. White aluminum base, opal polycarbonate lens. Less lamp. 631 mm long. "CE" Mark
	92392	Pg. 257	Fluorescent lamp. 18 watts. Cool white color. Type TC11W. For fixture No. 681386.
	681485	Pg. 230	Fluorescent light fixture. 36 watts, 230 volts, 50 Hz. IP 44 class 1. White aluminum base, opal polycarbonate lens. Less lamp. 1,241 mm long. "CE" Mark
	702708	Pg. 234	Fluorescent lamp. 36 watts. Cool white color. Type T2636W. For fixture No. 681485.



230 VOLT LIGHT FIXTURES Incandescent Type

Description	Cat. No.	Approvals	Drawing	
<p>100 watt-230 volt oval design surface mount lighting fixture. Thermoplastic gray base, clear glass cover with metal guard. IP 44 splashproof type. Less lamp. E-27 lamp base.</p> <p>E-27 100 watt lamp for lighting fixture No. 69222.</p> <p>E-27 75 watt lamp for lighting fixture No. 69222.</p>	69222	8, 14, 22	Pg. 230	 <p>69222</p>
	69300	N/A	N/A	
	69275	N/A	N/A	
<p>75 watt-230 volt round design surface mount lighting fixture. Thermoplastic white base, clear glass cover with molded guard. IP 44 splashproof type. Less lamp. E-27 lamp base.</p> <p>E-27 75 watt lamp for lighting fixture No. 69214.</p>	69214	8, 12, 14, 18, 22	Pg. 230	 <p>69214</p>
	69275	N/A	N/A	
<p>75 watt-230 volt round design interior surface mount lighting fixture. White glass cover with flush mounting flange. E-27 lamp base.</p> <p>E-27 75 watt lamp for lighting fixture No. 69204.</p>	69204	8, 14, 22	Pg. 230	 <p>69204</p>
	69275	N/A	N/A	
<p>60 watt-230 volt strip light fixture. Thermoplastic white base and clear cover. With lamp.</p> <p>60 watt lamp for strip light fixture No. 60620.</p>	60620	21	Pg. 230	 <p>60620</p>
	60684	N/A	Pg. 230	

Approvals: 1.ASTA 2.CEBEC 3.CSA 4.DEMKO 5.PSE(JET) 6.EANSW(DFT) 7.FI 8.GS 9.IMQ 10.JET 11.JIS 12.KEMA 13.NEMKO 14.OVE 15.SAA 16.SABS 17.SEMKO 18.SEV 19.SII 20.UL 21.UTE 22.VDE 23.ISO 24.CCC 25.IRAM 26.BSI



© 2004 International Configurations, Inc. Entire contents of this catalog copyrighted. www.InternationalConfig.com

International Configurations, Inc. • P.O. Box 3374 • Enfield, Connecticut 06083 • TEL (860) 749-6380 • FAX (860) 749-2985 201