

## IEC 60309 DEVICES, IP44, IP67 (6H) 2 Pole 3 Wire Grounding

30 Amp 250 Volt A.C. - North American Rated  
32 Amp 220-250 Volt A.C. - European Rated

Blue Color



E-mail: [sales@internationalconfig.com](mailto:sales@internationalconfig.com)

Web site: [www.internationalconfig.com](http://www.internationalconfig.com)

UNIVERSAL  
APPROVED



**SPLASHPROOF IP44**

**WATERTIGHT IP67**

DEVICE SPECIFICATION DOCUMENTS  
AVAILABLE ON OUR WEBSITE



888-2138-NS



888-2169-NS



888-3138-NS



888-3169-NS



888-13007-NS



888-13024-NS



888-1229-NS



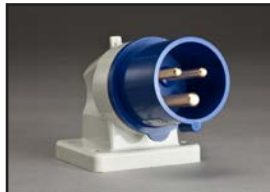
888-42326-NS



888-1114-NS



888-3227-NS



888-631306



888-72326-NS



888-6236-NS



999-623, 999-623-WP

### Cable Mounting Plugs

**888-2138-NS** Splashproof Plug, IP44 Rated.

**888-2169-NS** Watertight Plug, IP67 Rated.

Compression Strain Relief & Cord Grip.

Nylon ( Polyamide 6 ) Body. Color: Blue.

Contacts: Nickel Plated Brass, Brass.

Operating Temp: -25°C to + 80°C

### Cable Mounting Connectors

**888-3138-NS** Splashproof Connector, IP44 Rated.

**888-3169-NS** Watertight Connector, IP67 Rated.

Compression Strain Relief & Cord Grip.

Nylon ( Polyamide 6 ) Body. Color: Blue.

Contacts: Nickel Plated Brass, Brass.

Operating Temp: -25°C to + 80°C

### Panel Mount Receptacles, Straight Type

**888-13007-NS** Splashproof Receptacle, IP44 Rated.

**888-13024-NS** Watertight Receptacle, IP67 Rated.

Nylon ( Polyamide 6 ) Body. Color: Blue.

Contacts: Nickel Plated Brass, Brass.

Operating Temp: -25°C to + 80°C

### Panel Mount Receptacles, Angled Type

**888-1229-NS** Splashproof Receptacle, IP44 Rated.

**888-42326-NS** Watertight Receptacle, IP67 Rated.

Nylon ( Polyamide 6 ) Body. Color: Blue.

Contacts: Nickel Plated Brass, Brass.

Operating Temp: -25°C to + 80°C

### Surface Mount Receptacles with Box

**888-1114-NS** Splashproof Receptacle, IP44 Rated.

**888-3227-NS** Watertight Receptacle, IP67 Rated.

Nylon ( Polyamide 6 ) Body. Color: Blue.

Contacts: Nickel Plated Brass, Brass.

Operating Temp: -25°C to + 80°C

### Surface Mount Inlets, Down Angled Type

**888-631306** Splashproof Inlet, IP44 Rated.

**888-72326-NS** Watertight Inlet, IP67 Rated.

Nylon ( Polyamide 6 ) Body. Color: Blue.

Contacts: Nickel Plated Brass, Brass.

Operating Temp: -25°C to + 80°C

### Panel Mount Inlet, Straight Type

**888-6236-NS** Splashproof Receptacle, IP44 Rated.

Nylon ( Polyamide 6 ) Body. Color: Blue.

Contacts: Nickel Plated Brass, Brass.

Operating Temp: -25°C to + 80°C

### Plug and Inlet Closure Cap.

**999-623** Color: Gray

**999-623-WP** Watertight Cap, IP67 Rated. Color: Gray

