

IEC 60309 DEVICES, IP67 (6H) 4 Pole 5 Wire Grounding, 3 Phase

100 Amp 380-415V, 400 Volt A.C. - N. American Rated
125 Amp 220/380-240/415 Volt A.C. - European Rated

Red Color



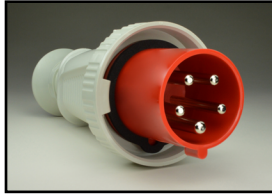
E-mail: sales@internationalconfig.com

Web site: www.internationalconfig.com

**UNIVERSAL
APPROVED**



WATERTIGHT IP67



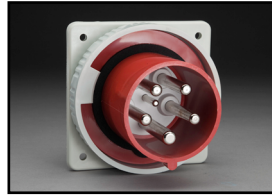
888-2199



888-3199



888-479



888-679



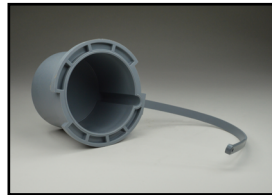
888-12108



888-678



888-179



999-645-WP

Cable Mounting Plug

888-2199 Watertight Plug, IP67 Rated.

Cable Mounting Connector

888-3199 Watertight Connector, IP67 Rated.

Compression Strain Relief & Cord Grip.

Nylon (Polyamide 6) Body. Color: Red.

Contacts: Nickel Plated Brass, Brass.

Operating Temp: -25°C to + 90°C

Panel Mount Receptacle, Straight Type

888-479 Watertight Receptacle, IP67 Rated.

Panel Mount Inlet, Straight Type

888-679 Watertight Inlet, IP67 Rated.

Compression Strain Relief & Cord Grip.

Nylon (Polyamide 6) Body. Color: Red.

Contacts: Nickel Plated Brass, Brass.

Operating Temp: -25°C to + 90°C

Panel Mount Receptacle, Angled Type

888-12108 Watertight Receptacle, IP67 Rated.

Surface Mount Inlet with Box

888-678 Watertight Inlet, IP67 Rated.

Nylon (Polyamide 6) Body. Color: Red.

Contacts: Nickel Plated Brass, Brass.

Operating Temp: -25°C to + 90°C

Surface Mount Receptacle with Box

888-179 Watertight Receptacle, IP67 Rated.

Nylon (Polyamide 6) Body. Color: Red.

Contacts: Nickel Plated Brass, Brass.

Operating Temp: -25°C to + 90°C

Plug and Inlet Closure Cap.

999-645-WP Watertight Cap, IP67 Rated. Color: Gray.

IEC 60309 PIN AND SLEEVE TECHNICAL DATA

Electrical

Insulation Resistance:
Dielectric Voltage Withstand:
Current Interrupting:

500V for 1 Min. Resistance $\geq 5M \Omega$
3000V for 1 Min.
Certified for current interrupting at full rated current and voltage.

Material

Housing:

Polyamide 6 - High impact and abrasion resistant. Resistant to oil, petrol, most acids and alkalines.

Contacts:

Copper-Zinc Alloy, Nickel Plated Brass, Brass.

Contact Terminals:

Copper-Zinc Alloy, Nickel Plated Brass, Brass, Steel.

Environmental

Temperature Range:
Temperature Resistance:
Flamability:

16-32 Ampere Devices (-25°C to +80°C), 60-125 Ampere Devices (-25°C to +90°C)
Up to 1 hour +100°C
Self-extinguishing per IEC 309-1, clause 27. V-2 or better per UL94 or CSA22.2 No. 0.6.

