

# IEC 60309 - CEE 17 - IP44 Splashproof Inlets

888-Part Numbers

UL, CSA, European & International  
Universal Approvals

999-Part Numbers

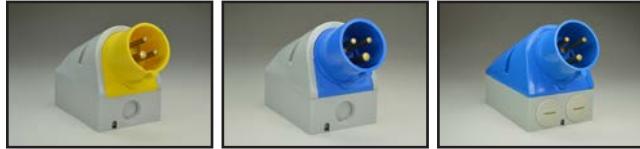
European & International  
Approvals

E-mail: [sales@internationalconfig.com](mailto:sales@internationalconfig.com)

Web site: [www.internationalconfig.com](http://www.internationalconfig.com)



Wall Mount With Box



**Plug and Inlet Closure Caps. Fits 999- & 888- Devices.**  
 16A / 20 Amp 2P+E Dust Cap P/N 999-613, P/N 999-613-WP  
 16A / 20 Amp 3P+E Dust Cap P/N 999-614, P/N 999-614-WP  
 16A / 20 Amp 3P+N+E Dust Cap P/N 999-615, P/N 999-615-WP  
 32A / 30 Amp 2P+E, 3P+E Dust Cap P/N 999-623, P/N 999-623-WP  
 32A / 30 Amp 3P+N+E Dust Cap P/N 999-625, P/N 999-625-WP  
 63A / 60 Amp Dust Cap P/N 999-635  
 125A / 100 Amp Dust Cap P/N 999-645  
 63A / 60 Amp IP67 Watertight Cap P/N 999-635-WP  
 125A / 100 Amp IP67 Watertight Cap P/N 999-645-WP

**50/60 Hertz Hz**

IEC EN 60309-1  
IEC EN 60309-2  
UL 1682  
C22.2 No. 182.1

BS 4343  
SABS 1239  
VDE 0623  
DIN 49462/63

Visit our web site to obtain dimensional product prints and specification data for part numbers listed below. Use the "Search by Part Number" field located on our homepage. Contact us for data sheets and specifications if the item you searched for is not displayed.

VOLTAGE	AMPS	POLES	GROUND POSITION	DEVICE COLOR	PART NUMBER	DESCRIPTION
110-130 V	16 A	2 P + E	4H	Yellow	999-244-NS	Inlet, IP44, European Approved
110-130 V	32 A	2 P + E	4H	Yellow	999-2416-NS	Inlet, IP44, European Approved
120 V	20 A	2 P + E	4H	Yellow	888-5335-NS	Inlet, IP44, UL, CSA & European Listed
120 V	30 A	2 P + E	4H	Yellow	888-5435-NS	Inlet, IP44, UL, CSA & European Listed
220/250 V	16A / 20A	2 P + E	6H	Blue	888-245-NS	Inlet, IP44, UL, CSA & European Listed
220/250 V	16 A	3 P + E	9H	Blue	999-248-NS	Inlet, IP44, European Approved
120/208-144/250 V	16 A	3 P + N + E	9H	Blue	999-2414-NS	Inlet, IP44, European Approved
220/250 V	32A / 30A	2 P + E	6H	Blue	888-2417-NS	Inlet, IP44, UL, CSA & European Listed
220/250 V	32 A	3 P + E	9H	Blue	999-2420-NS	Inlet, IP44, European Approved
120/208-144/250 V	32 A	3 P + N + E	9H	Blue	999-2426-NS	Inlet, IP44, European Approved
220/250 V	63A / 60A	2 P + E	6H	Blue		
220/250 V	63 A	3 P + E	9H	Blue		
120/208-144/250 V	63 A	3 P + N + E	9H	Blue		
220/250 V	125 A	2 P + E	6H	Blue		
220/250 V	125 A	3 P + E	9H	Blue		
120/208-144/250 V	125 A	3 P + N + E	9H	Blue		
380/415 V	16 A	2 P + E	9H	Red	999-246-NS	Inlet, IP44, European Approved
380/415 V	16 A	3 P + E	6H	Red	999-249-NS	Inlet, IP44, European Approved
220/380-240/415 V	16A / 20A	3 P + N + E	6H	Red	888-2415-NS	Inlet, IP44, UL, CSA & European Listed
380/415 V	32 A	2 P + E	9H	Red	999-2418-NS	Inlet, IP44, European Approved
380/415 V	32 A	3 P + E	6H	Red	999-2421-NS	Inlet, IP44, European Approved
220/380-240/415 V	32A / 30A	3 P + N + E	6H	Red	888-2427-NS	Inlet, IP44, UL, CSA & European Listed
380/415 V	63 A	2 P + E	9H	Red		
380/415 V	63 A	3 P + E	6H	Red		
220/380-240/415 V	63A / 60A	3 P + N + E	6H	Red		
380/415 V	125 A	2 P + E	9H	Red		
380/415 V	125 A	3 P + E	6H	Red		
220/380-240/415 V	125A / 100A	3 P + N + E	6H	Red		

© 2014 International Configurations, Inc. Entire contents of this catalog copyrighted. [www.InternationalConfig.com](http://www.InternationalConfig.com)

