

CIRCUIT BREAKER ENCLOSURES AND ACCESSORIES
SURFACE MOUNT ENCLOSURES
RECESS FLUSH MOUNT ENCLOSURES
POWER DISTRIBUTION BLOCKS AND BLANKING PLATES

E-mail: sales@internationalconfig.com

Web site: www.internationalconfig.com

Description

Surface mount enclosure.

Part Number: AN25

IP 40 protection. Cable entry top and bottom. For use with 1 double pole or two single pole breakers. Grounding terminal included.



AN25

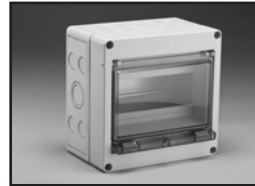


4QEL

Surface mount enclosures.

Part Numbers: 4QEL, 8QEL, 12QEL and 24QEL

Accepts GFCI RCCB breakers, combination GFCI and overload protection RCBO breakers and MCB overload protection circuit breakers. IP54 protection with hinged and gasketed transparent cover. IP65 protection available with optional IP65 cable glands. Cable entry top, bottom and sides. **For use with one-pole, two-pole and three-pole circuit breakers.** Grounding terminal strip, neutral strip, box accessories included.



8QEL



12QEL



24QEL

Surface mount enclosures.

Part Numbers: EAS12, EAS18 and EAS26

Accepts GFCI RCCB breakers, combination GFCI and overload protection RCBO breakers and MCB overload protection circuit breakers. IP30 protection with hinged cover. Cable entry top, bottom and back. **For use with one-pole, two-pole and three-pole circuit breakers.** Includes 100 Amp Main switch, Line busbar, Grounding terminal strip, Neutral terminal strip and box accessories.



EAS12



EAS12F



EAS18



EAS18F

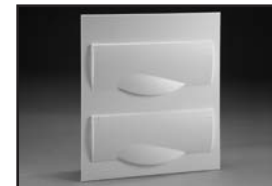
Recess mount enclosures.

Part Numbers: EAS12F, EAS18F and EAS26F

Accepts GFCI RCCB breakers, combination GFCI and overload protection RCBO breakers and MCB overload protection circuit breakers. IP30 protection with hinged cover. Cable entry top, bottom and back. **For use with one-pole, two-pole and three-pole circuit breakers.** Includes 100 amp Main switch, Line busbar, Grounding terminal strip, Neutral terminal strip and box accessories.



EAS26



EAS26F

Blanking plate

Part Number: QBP5

Used for filling unused openings in enclosures.



QBP5

One phase power distribution block.

Part Number: 38041

125 ampere 600 volt ac. DIN rail mount. Line side accepts one #8-2 AWG conductor. Six #14-6 AWG loadside terminals.



38041

