

# PRODUCT INSTALLATION GUIDE PANEL MOUNTING DEVICES

# INTERNATIONAL MODULAR DEVICES

The receptacles, switches and pilot lights identified in this catalog as “**Modular**” are designed for snap-in mounting to panels on electrical / electronic equipment. This concept allows for fast, easy production change-over when exporting products to various countries as a **standard** panel cutout will accept the receptacles used in each country. In addition, any combination or multiples of receptacles and switches can be ganged together as indicated on the cut-out calculation chart.

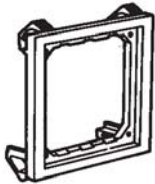
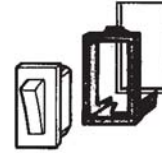
## SNAP-IN FRAMES (BEZELS)

For mounting "modular" devices on panels from 1.0 to 3.0 mm thick  
See calculation chart at bottom of page for panel cutout details



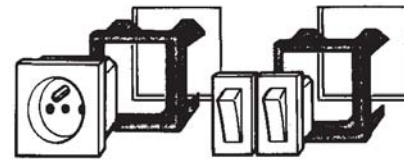
**79110x45**

Accepts one (1) 22.5 x 45 mm device

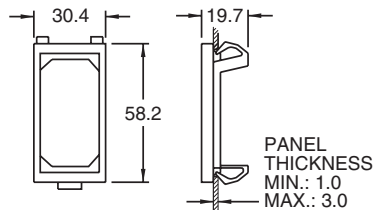
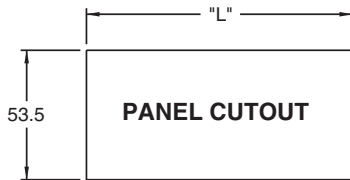


**79100x45**

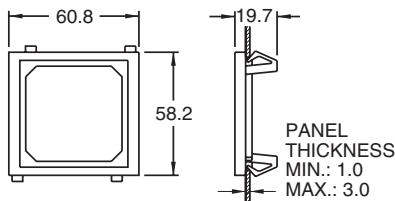
Accepts one (1) 45 x 45 mm device  
or  
two (2) 22.5 x 45 mm devices



## PANEL CUTOUT CALCULATION CHART



**79110x45**



**79100x45**

**Cutout Calculation:** Use the chart below to calculate the length ("L") of the panel cutout required to install one or more "modular" devices.  
**All dimensions are in millimeters (1 mm = 0.039")**

		Number of 79100x45's to be installed into cutout									
		0	1	2	3	4	5	6	7	8	
Number of 79110x45's to be installed into cutout	0		58.6	119	180	240.5	301.5	362.5	423	484	
	1	28	88.5	149.5	210.5	271	332	392.5	453.5		
	2	58.5	119	180	240.5	301.5	362.5	423	484		
	3	88.5	149.5	210.5	271	332	392.5	453.5			
	4	119	180	240.5	301.5	362.5	423	484			
	5	149.5	210.5	271	332	392.5	453.5				
	6	180	240.5	301.5	362.5	423	484				
	7	210.5	271	332	392.5	453.5					
	8	240.5	301.5	362.5	423	484					
	9	271	332	392.5	453.5						
	10	301.5	362.5	423	484						
	11	332	392.5	453.5							
	12	362.5	423	484							
	13	392.5	453.5								
	14	423	484								
	15	453.5									

