

IEC 60309 DEVICES, IP44, IP67 (6H)

4 Pole 5 Wire Grounding, 3 Phase

20 Amp 200-415 Volt A.C. - N. American Rated

16 Amp 220/380-240/415 Volt A.C. - European Rated

Red Color



E-mail: sales@internationalconfig.com

Web site: www.internationalconfig.com

UNIVERSAL
APPROVED



DEVICE SPECIFICATION DOCUMENTS
AVAILABLE ON OUR WEBSITE

SPLASHPROOF IP44

WATERTIGHT IP67

Cable Mounting Plugs

888-203-NS Splashproof Plug, IP44 Rated.

888-2167-NS Watertight Plug, IP67 Rated.

Compression Strain Relief & Cord Grip.

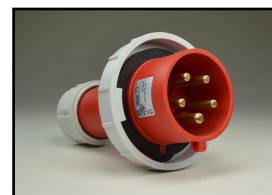
Nylon (Polyamide 6) Body. Color: Red.

Contacts: Nickel Plated Brass, Brass.

Operating Temp: -25°C to + 80°C



888-203-NS



888-2167-NS

Cable Mounting Connectors

888-303-NS Splashproof Connector, IP44 Rated.

888-3167-NS Watertight Connector, IP67 Rated.

Compression Strain Relief & Cord Grip.

Nylon (Polyamide 6) Body. Color: Red.

Contacts: Nickel Plated Brass, Brass.

Operating Temp: -25°C to + 80°C



888-303-NS



888-3167-NS

Panel Mount Receptacles, Straight Type

888-13005-NS Splashproof Receptacle, IP44 Rated.

888-1382-NS Watertight Receptacle, IP67 Rated.

Nylon (Polyamide 6) Body. Color: Red.

Contacts: Nickel Plated Brass, Brass.

Operating Temp: -25°C to + 80°C



888-13005-NS



888-1382-NS

Panel Mount Receptacles, Angled Type

888-1227-NS Splashproof Receptacle, IP44 Rated.

888-1276-NS Watertight Receptacle, IP67 Rated.

Nylon (Polyamide 6) Body. Color: Red.

Contacts: Nickel Plated Brass, Brass.

Operating Temp: -25°C to + 80°C



888-1227-NS



888-1276-NS

Surface Mount Receptacles with Box

888-102-NS Splashproof Receptacle, IP44 Rated.

888-1043-NS Watertight Receptacle, IP67 Rated.

Nylon (Polyamide 6) Body. Color: Red.

Contacts: Nickel Plated Brass, Brass.

Operating Temp: -25°C to + 80°C



888-102-NS



888-1043-NS

Surface Mount Inlets, Down Angled Type

888-2757-NS Splashproof Inlet, IP44 Rated.

888-2793-NS Watertight Inlet, IP67 Rated.

Nylon (Polyamide 6) Body. Color: Red.

Contacts: Nickel Plated Brass, Brass.

Operating Temp: -25°C to + 80°C



888-2757-NS



888-2793-NS

Panel Mount Inlet, Straight Type

888-7156-NS Splashproof Receptacle, IP44 Rated.

Nylon (Polyamide 6) Body. Color: Red.

Contacts: Nickel Plated Brass, Brass.

Operating Temp: -25°C to + 80°C

Plug and Inlet Closure Cap.

999-615 Color: Gray

999-615-WP Watertight Cap, IP67 Rated. Color: Gray



888-7156-NS



999-615, 999-615-WP

